

House & Land Package.



House and land package from \$680,787*

Address: 2 Smith Street, Daylesford (637sqm)

Inclusions:

- + H2 Waffle Pod Slab Included
- + 900mm Westinghouse Appliances
- + 2550mm ceiling heights throughout
- + 20mm Caesarstone to kitchen bench top
- + Double glazed windows
- + Westinghouse Dishwasher Included

Edgewater 219 - Element Series

4  2  2 

Give us a call or drop in for a chat today.

Office:

Ballarat

1/1021 Sturt St, Ballarat Vic 3350

Ballarat Regional Developments Pty Ltd CDB-U
50435

David Hocking

Sales Consultant

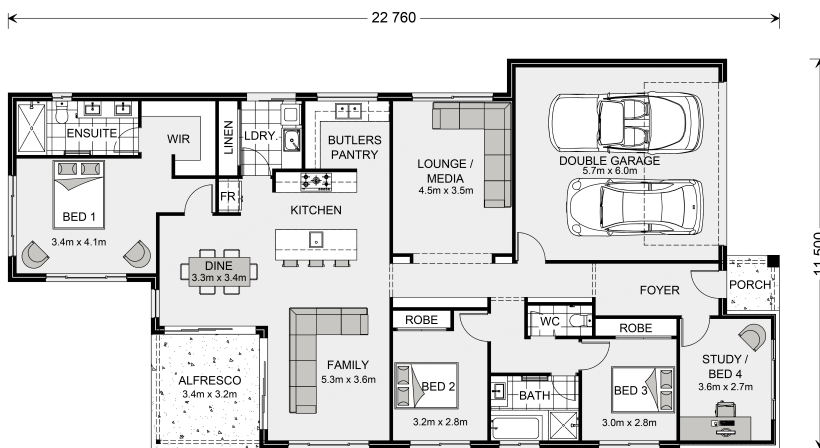
Call: 0413 568 625

Email: david.hocking@gjgardner.com.au

Call: 03 5334 4099

Email: ballarat@gjgardner.com.au

Or visit gjgardner.com.au



*Images and photographs may depict fixtures, finishes and features either not supplied by G.J. Gardner Homes or not included in any price stated. These items include furniture, swimming pools, pool decks, fences, landscaping - including planter boxes, retaining walls, water features, pergolas, screens and decorative landscaping items such as fencing and outdoor kitchens and barbecues. For detailed home pricing, please talk to a new homes consultant.

Welcome **home.**

G.J. Gardner. **HOMES**